

# GULF STREAM ESTATES NORTH

BEING A REPLAT LOTS 1, 1-A AND A PORTION OF LOT 2, McCLOUTH SUBDIVISION, ACCORDING TO THE PLAT THEREOF AS RECORDED IN PLAT BOOK 25, PAGE 67 (P.B.C.P.R.) AND A PORTION OF SECTION 9, TOWNSHIP 46 SOUTH, RANGE 43 EAST, TOWN OF GULF STREAM, PALM BEACH COUNTY, FLORIDA

MARCH 2014  
SHEET 2 OF 2

SCALE: 1" = 30'  
0' 30' 60' 90'

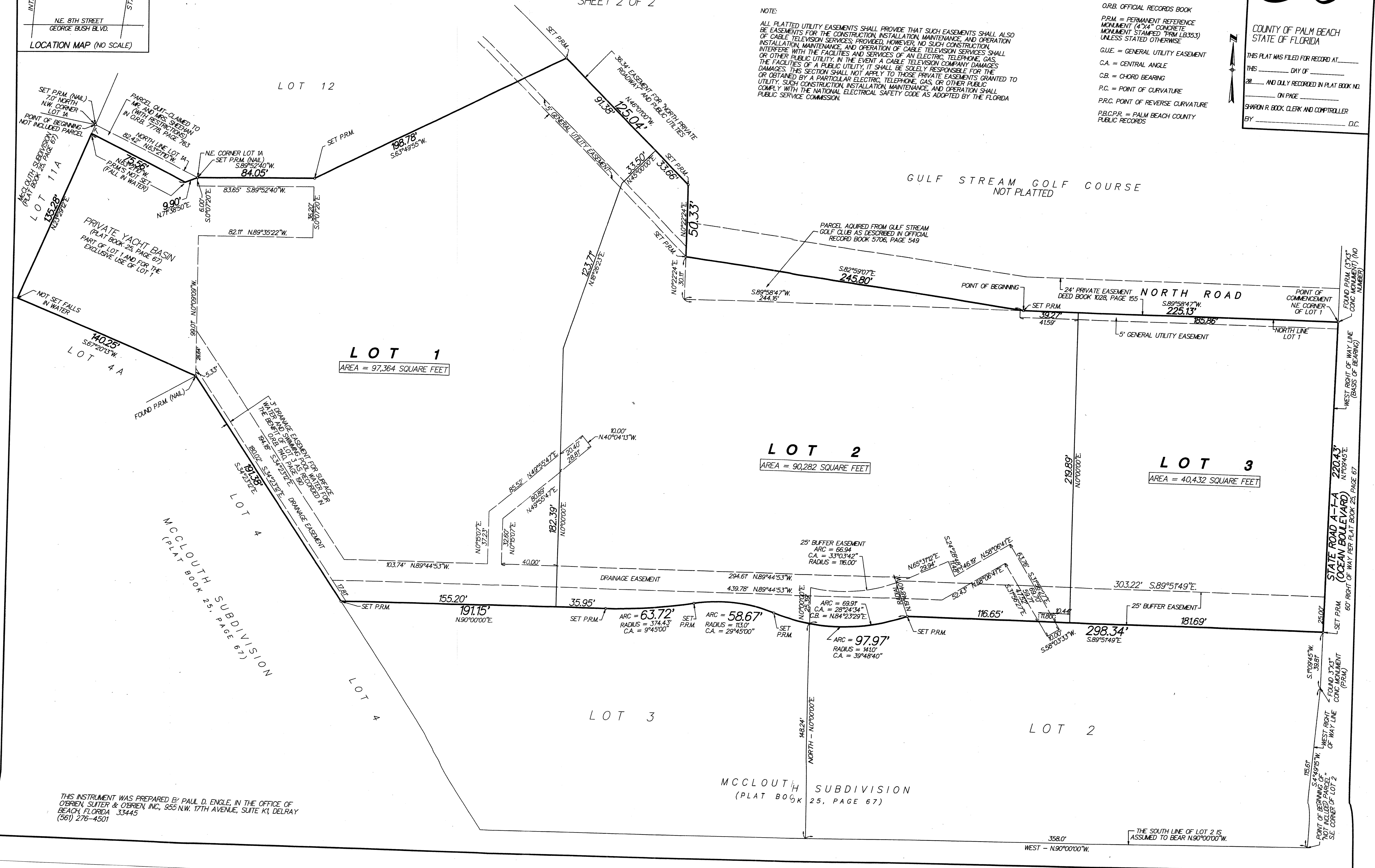
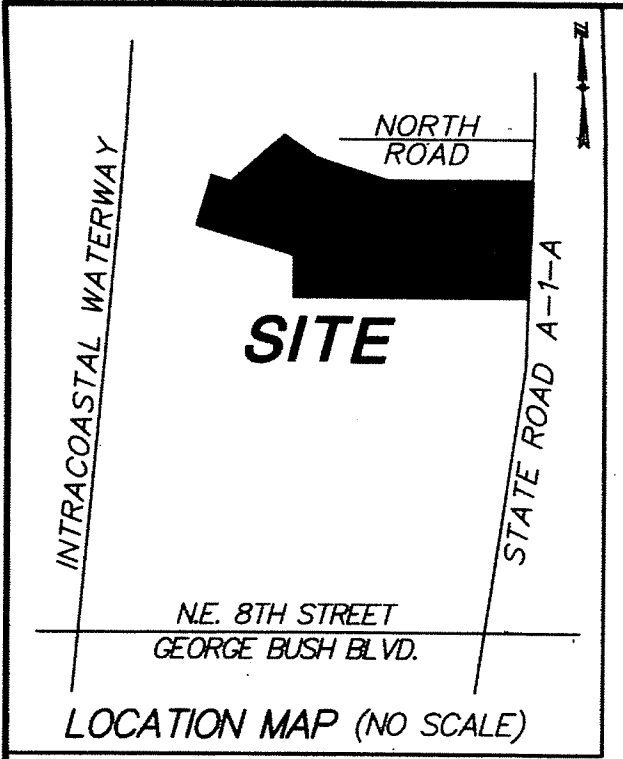
- LEGEND:
- ⊕ = CENTERLINE
  - CONC = CONCRETE
  - O.R.B. = OFFICIAL RECORDS BOOK
  - PRM = PERMANENT REFERENCE MONUMENT (4"x4" CONCRETE UNLESS STATED OTHERWISE)
  - G.U.E. = GENERAL UTILITY EASEMENT
  - C.A. = CENTRAL ANGLE
  - C.B. = CHORD BEARING
  - P.C. = POINT OF CURVATURE
  - P.R.C. = POINT OF REVERSE CURVATURE
  - P.B.C.P.R. = PALM BEACH COUNTY PUBLIC RECORDS

30

COUNTY OF PALM BEACH  
STATE OF FLORIDA

THIS PLAT WAS FILED FOR RECORD AT \_\_\_\_\_  
THIS \_\_\_\_\_ DAY OF \_\_\_\_\_  
20\_\_\_\_ AND DULY RECORDED IN PLAT BOOK NO. \_\_\_\_\_  
ON PAGE \_\_\_\_\_  
SHARON R. BOOK, CLERK AND COMPTROLLER  
BY \_\_\_\_\_ D.C.

NOTE:  
ALL PLATTED UTILITY EASEMENTS SHALL PROVIDE THAT SUCH EASEMENTS SHALL ALSO BE EASEMENTS FOR THE CONSTRUCTION, INSTALLATION, MAINTENANCE, AND OPERATION OF CABLE TELEVISION SERVICES; PROVIDED, HOWEVER, NO SUCH CONSTRUCTION, INSTALLATION, MAINTENANCE, AND OPERATION OF CABLE TELEVISION SERVICES SHALL INTERFERE WITH THE FACILITIES AND SERVICES OF AN ELECTRIC, TELEPHONE, GAS, OR OTHER PUBLIC UTILITY. IN THE EVENT A CABLE TELEVISION COMPANY DAMAGES THE FACILITIES OF A PUBLIC UTILITY, IT SHALL BE SOLELY RESPONSIBLE FOR THE DAMAGES. THIS SECTION SHALL NOT APPLY TO THOSE PRIVATE EASEMENTS GRANTED TO OR OBTAINED BY A PARTICULAR ELECTRIC, TELEPHONE, GAS, OR OTHER PUBLIC UTILITY. SUCH CONSTRUCTION, INSTALLATION, MAINTENANCE, AND OPERATION SHALL COMPLY WITH THE NATIONAL ELECTRICAL SAFETY CODE AS ADOPTED BY THE FLORIDA PUBLIC SERVICE COMMISSION.



THIS INSTRUMENT WAS PREPARED BY: PAUL D. ENGLE, IN THE OFFICE OF O'BRIEN, SLITER & O'BRIEN, INC., 955 N.W. 17TH AVENUE, SUITE K1, DELRAY BEACH, FLORIDA 33445 (561) 276-4501

MCCLOUTH SUBDIVISION  
(PLAT BOOK 25, PAGE 67)

THE SOUTH LINE OF LOT 2 IS ASSUMED TO BEAR N90°00'00"W.